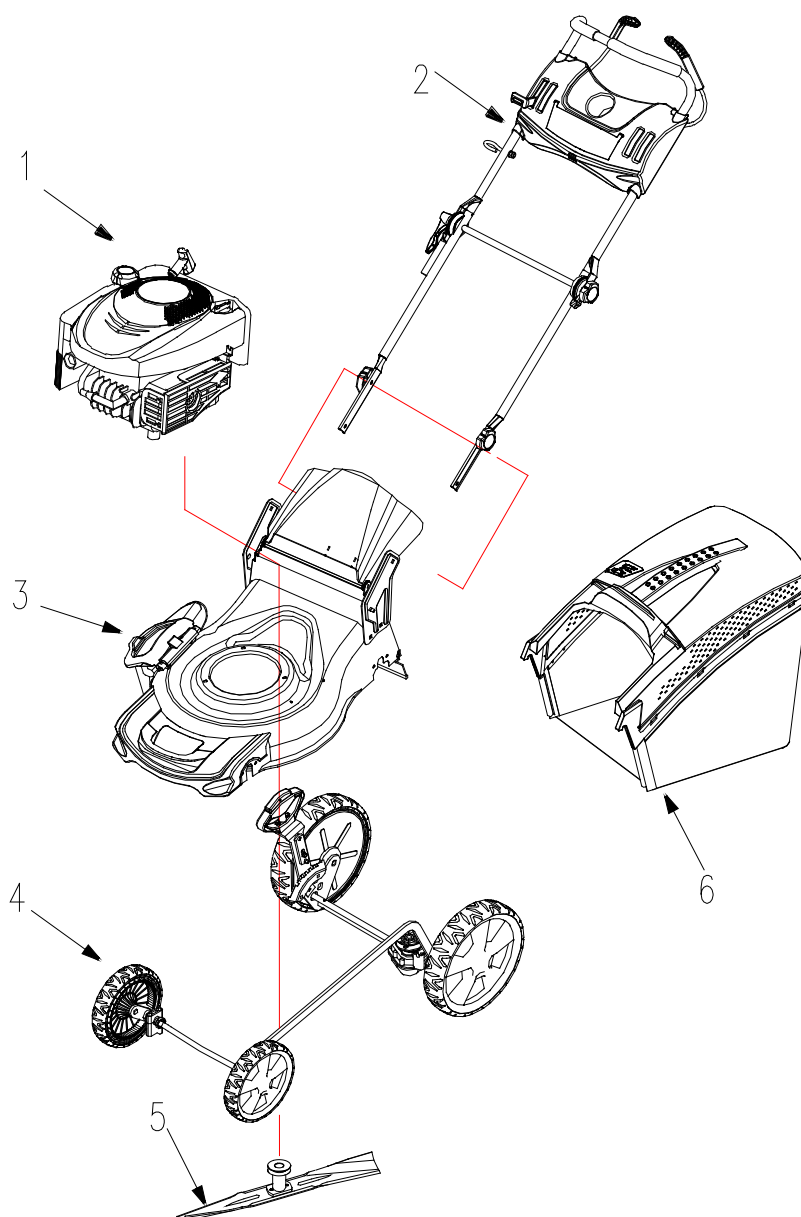


MOWER ASSEMBLY.....	1
HANDLEBAR &CONSOLE.....	2
MOWER DECK ASSEMBLY.....	4
DRIVE ASSEMBLY.....	6
STRAIGHT BLADE ASSEMBLY.....	8
GRASS BAG ASSEMBLY.....	9



沃得集团
WORLD GROUP

MOWER ASSEMBLY

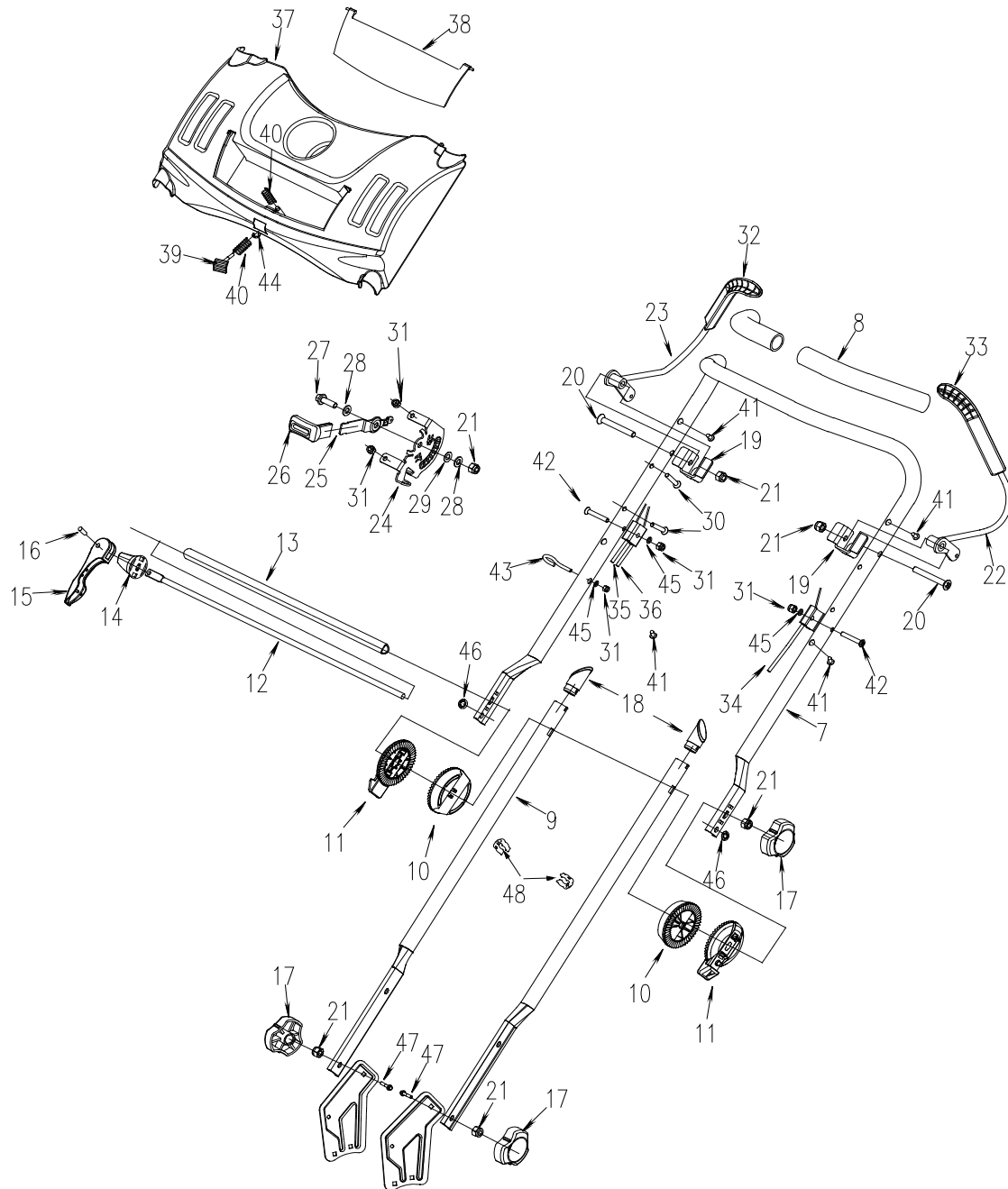


REF NO.	PART NO.	DESCRIPTION	Quantity
1		BS50 Engine	1
2		Handlebar & Console	1
3		Mower Deck Assembly	1
4		Drive Assembly	1
5		Straight Blade Assembly	1
6		Grass Bag Assembly	1



沃得集团
WORLD GROUP

HANDLEBAR & CONSOLE





沃得集团
WORLD GROUP

HANDLEBAR & CONSOLE

REF	PART NO.	DESCRIPTION	Quantity
7	1818022	Upper Handlebar	1
8	04016324	Handle Grip	2
9	1818024	Lower Handlebar	2
10	04016731	Inside control plate	2
11	04016734	External control plate	2
12	1818027	Quick fix handle lever	1
13	1818025	Stiffener	1
14	04016743	Control block	1
15	1600511	Quick fix	1
16	B879-619	Pin 6*19	1
17	1818028	Knob Nut	3
18	1818038	Pipe plug	2
19	1818023	Limit board	2
20	B820-865	Screw M8*65	2
21	B6182-8	Nut M8	6
22	1818030	Blade Control Handle	1
23	1818032	Drive Clutch Lever	1
24	1818040	Support	1
25	1818039	Throttle control handle	1
26	2110087	Wrench cover	1
27	B5787-825	Bolt M8*25	1
28	B97.1-8	Washer 8	2
29	B1972-A16-1	Dish spring	1
30	B820-635	Screw M6*35	2
31	B6182-6	Nut M6	5
32	04016797	Wrench cover	1
33	04016799	Wrench cover	1
34	1818042	Holding brake pull	1
35	1818041	Clutch Cable	1
36	1818037	Throttle flexible shaft	1
37	1818029	Panel	1
38	1818035	Cover	1
39	1818036	Knob	1
40	1818043	Pressure spring	2
41	B845-4213	Self-tapping screw ST4.2*13	4
42	B820-640	Screw M6*40	2
43	WORD18.6-05	Guy hook	1
44	B896-3	Split washer 3	1
45	B97.1-6	washer 6	3
46	04004228	Star lock 5	2
47	B801-820	Bolt M8*20	2
48	2011031	Cable clip	2



This exploded view diagram illustrates the assembly of a vehicle seat. The central component is the seat base (1), which features a circular opening for the seat cushion. Surrounding the base are various components, including the seat backrest (2), seat cushion (3), and seat frame (4). The diagram shows the relationship between these parts and their respective fasteners, such as bolts (5, 6, 7, 8, 9, 10, 11, 12, 13, 14, 15, 16, 17, 18, 19, 20, 21, 22, 23, 24, 25, 26, 27, 28, 29, 30, 31, 32, 33, 34, 35, 36, 37, 38, 39, 40, 41, 42, 43, 44, 45, 46, 47, 48, 49, 50, 51, 52, 53, 54, 55, 56, 57, 58, 59, 60, 61, 62, 63, 64, 65, 66, 67, 68, 69, 70, 71, 72, 73, 74, 75, 76, 77, 78, 79, 80, 81, 82, 83, 84). The diagram is a technical drawing with dashed lines indicating the assembly path and alignment of the parts.



沃得集团
WORLD GROUP

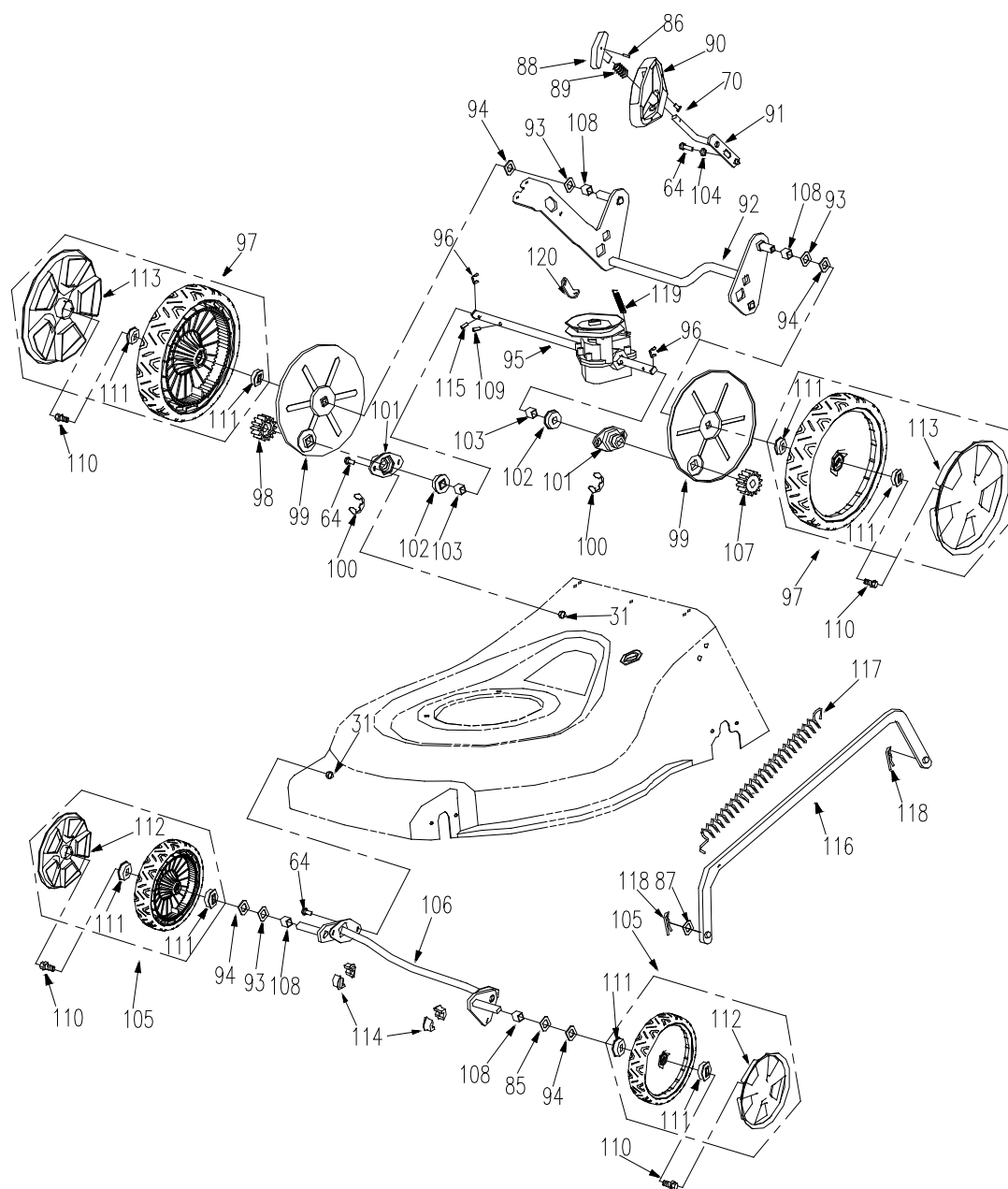
MOWER DECK ASSEMBLY

REF	PART NO.	DESCRIPTION	Quantity
45	B97.1-6	Flat Washer 6mm	2
31	B6182-6	Nylon Insert Lock Nut M6mm	4
21	B6182-8	Nylon Insert Lock Nut M8mm	9
49	2100350	Rod, Rear Cover	1
50	2100466	Rear Cover	1
51	2018006	Left Bracket	1
53	2012013	V-Belt A800	1
54	B5787-835	Bolt M8x35	3
55	2100012	Swing nut	1
56	2008011	Baffle	1
57	2000019	Pivot Shaft	1
58	2018003	Mower Deck	1
59	2000016	Mulch Cover	1
60	2013008	Side Discharge Chute	1
61	2200021	Torsion Spring	1
62	2213000	Mounting Bracket	1
63	2012004	Height Adjustment Rack	1
64	B5787-616	Bolt M6x16	2
65	4LZ2.16.4-04	Rubber Ring	1
66	B91-216	Pin 2x16	4
67	2018007	Right Bracket	1
68	B801-816	Bolt M8x16	6
69	XSS46-15A	Rear Guard	1
70	B5787-620	Bolt M6x20	1
71	B96-6	Washer 6	3
72	2012003	Rear Cover Bracket	1
73	2012006	Torsion Spring	1
74	B93-6	Washer 6	1
75	2000066	Belt cover	1
77	B5285-5519	Self-tapping screw ST5.5X19C	6
78	B845-3525	Self-tapping screw ST3.5*25	4
79	2018016	Front handle	1
80	2018001	Front feeling	1
81	1818003	Front cover	1
82	B845-3516	Self-tapping screw ST3.5*16	3
83	B5285-5513F	Self-tapping screw ST5.5*13F	6
84	2012010	Mulching Plug	1



沃得集团
WORLD GROUP

DRIVE ASSEMBLY





沃得集团
WORLD GROUP

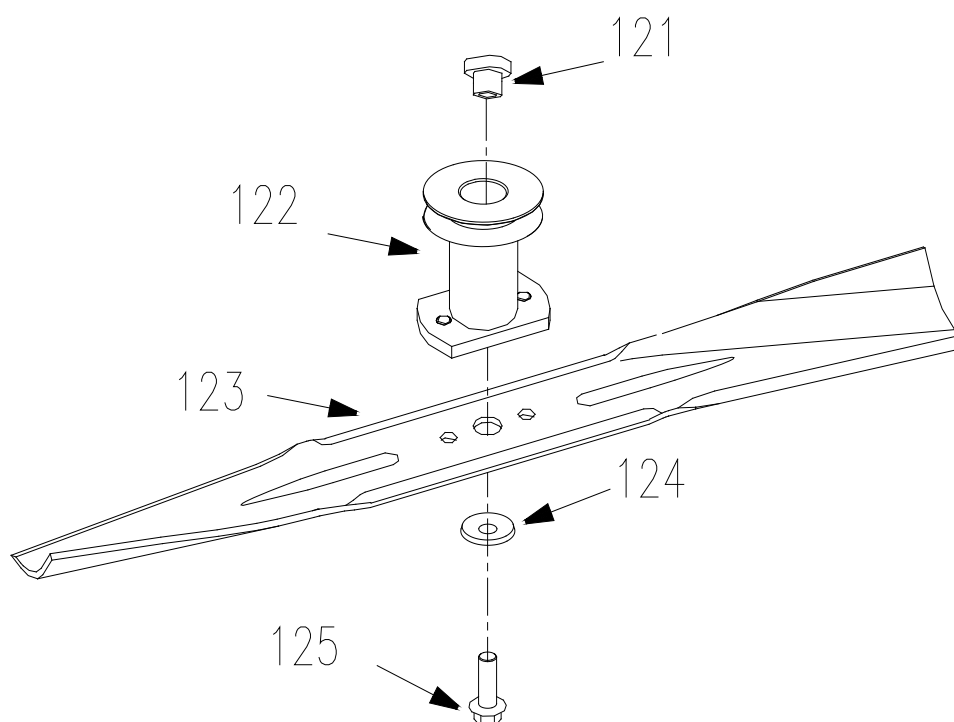
DRIVE ASSEMBLY

REF	PART NO.	DESCRIPTION	Quantity
31	B6182-6	Nut M6	10
64	B5787-616	Bolt M6×16	8
70	B5787-620	Bolt M6×20	2
85	2012012	Washer	1
86	B879-212	Pin 2×12	1
87	2000086	Flat washer 8	-
88	2012701A	Button	1
89	2012703	Pressure spring	1
90	2012702	Handle	1
91	2012710	Rear handle	1
92	2012720	Rear Axle Assembly	1
93	B97.1-12	Washer 12	3
94	B955-12	Washer 12	4
95	84551	GT gear box	1
96	B896-9	E-Clip 9	2
97	01110	11 " Wheel	2
98	2200033	Pinion Gear, Right	1
99	0110001	Cover	2
100	XSZ56-2-06	E-Clip 19	2
101	2207002A	Bearing seat	2
102	2207003	Bearing 8806	2
103	2207001	Bronze Bushing	2
104	2007006	Bushing	1
105	00800	8 " wheel	2
106	2012900	Front Shaft Assembly	1
107	2200032	Pinion Gear, Left	1
108	2007401	bushing	4
109	B879-516	Pin 5×16	2
110	B5787-816	Bolt M8×16	4
111	2201002	Bearing	8
112	00801	Hub cap	2
113	01111	Hub cap	2
114	WORD18-01	Bearing	4
115	XSZ56-2-08	Pin	2
116	2012200	Rod riveting	1
117	2200053	Tension spring	1
118	XSZ56-1-17	Hair Pin	2
119	2012016	Ttansmission Tension spring	1
120	2100249	Supporting plate	1



沃得集团
WORLD GROUP

BLADE ASSEMBLY

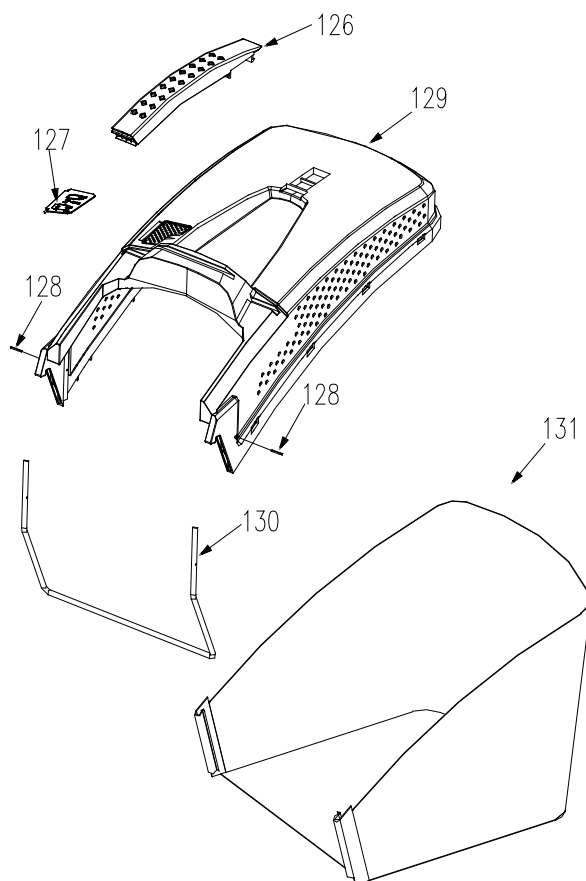


REF NO.	PART NO.	DESCRIPTION	Quantity
121	1819001	Bushing	1
122	2012100	Blade Adaptor	1
123	2000002	Blade	1
124	XSZ56-2-17	Washer	1
125	2200010	Bolt	1



沃得集团
WORLD GROUP

GRASS BAG ASSEMBLY



REF NO.	PART NO.	DESCRIPTION	Quantity
126	2100463A	Grass Bag Handle	1
127	2100446A	Access plate	1
128	B879-2513	Spring pin2.5X13	2
129	2100467A	Grass Bag Cover	1
130	2012611	Bag Frame	1
131	2012620	Grass Bag Assembly	1



沃得集团
WORLD GROUP

更新 1：生产时间 年 月 日

序号	原代号	名称	新代号	备注